

# HP Network Connectivity Products

## *Quick Reference Guide*



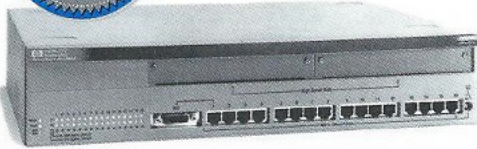
*The Advanced Solution in  
10Base-T and 100VG  
Networking Products —  
Hubs • Switches  
LAN Adapters  
Routers • Bridges  
Network Management*

### INSIDE

- Product Information
- Warranties
- Product Literature
- Configuration Tips
- Technical Training

Effective April 1, 1996  
Not intended for customer use

## HP Switches and Bridges



### HP J3100A

#### AdvanceStack Switch 2000

6 available slots for interfaces; 1 Gbp/s back-plane, universal port architecture, media flexibility; supports spanning tree, layer 3 protocol filtering, and broadcast throttling; ideal for interconnected workgroups

### HP J3101A

#### AdvanceStack Switch 2000 Bundle

Base unit (J3100A), with two 4-port Ethernet modules (J3102A), and one 2-port 100VG module (J3103A); HP AdvanceStack 100 Mbit transceivers for the 100VG module are required, and are ordered separately

### HP J3102A

#### AdvanceStack Switch 2000 Ethernet Module

Comes standard with 4 10Base-T RJ-25 ports, 1 transceiver slot can be used to support any existing AdvanceStack 10 Mbit transceiver

### HP J3103A

#### AdvanceStack Switch 2000 100VG Module

2 100VG ports, 2 recessed transceiver slots that support any of the HP AdvanceStack 100 Mbit transceivers (J3027A and J3028A); HP AdvanceStack 100 Mbit transceivers are required, and are ordered separately for this module

### HP J3136A

#### AdvanceStack Switch 2000

##### Redundant Power Supply

Ensures maximum up-time through dual load-sharing power supplies

### HP J3125A

#### AdvanceStack Switch 200

16 10 Mbit/s ports, 2 100VG ports; fixed configuration; supports SNMP, MIB II, Spanning Tree; address filtering for broadcast storms; over 4000 Mac addresses; extremely easy to use

### HP J2980A

#### AdvanceStack 10/100 LAN Switch-16

16 RJ-45 ports, 1 AUI port, 2 add-in high-speed interface slots; fast packet switching device, with network monitor port-ideal for integrating Ethernet and 10 Base-T workgroups with 100VG or other high speed workgroups

### HP J2981A

#### AdvanceStack 100VG Module

2 100VG RJ-45 ports, port LEDs for troubleshooting; transceiver slot for each port, supports 100VG transceivers

### HP J2984A

#### AdvanceStack 100Base-T Module

For the LAN Switch-16 (J2980); 1 port; UTP (Cat-5); full duplex; is not transceiver based

### HP 28681A

#### AdvanceStack Bridge LB

Unmanaged, 1 AUI or BNC port, 1 AUI-only port; low-cost local bridge for uncomplicated networks of medium size

### HP 28673A

#### AdvanceStack Bridge MB

Managed, STP, 1 AUI or BNC port, 1 AUI-only port; high-performance, local, spanning tree bridge for large fault-tolerant networks

### HP 28674B

#### AdvanceStack Bridge RB

Managed, STP, 1 AUI or BNC port, 1 WAN port, includes WAN cable; high-performance, spanning tree bridge for multisite networks

## Support

### Technical and Sales Support

- Resellers:

#### Customer Support Center

1-800-544-9976

HP Network Professional and Service Authorized (CZ) technicians may receive priority by pressing 2, then entering 10-digit HP outlet ID.

- End-users Hourly Support

1-800-790-5544

### Support Service Contracts

- Resellers order telephone support or software update services directly from HP; to order support, call your HP field office, distributor, or 1-800-437-9140.

## Configuration Tips

### Twisted-pair connectors

- HP hubs have Telco connectors, or 4-pair cables (RJ-45 connectors) via modular adapter. Use one adapter for each 12-port connector. (2 adapters come with each 24-port AdvanceStack hub, and 4 with each 48-port AdvanceStack hub.)

### Cables

- The following cable can be ordered directly from HP at 1-800-227-8164: Router-to-Router Test Cable (5061-2556) 62 DB-62 DB, RS-422/449. This cable is used for connecting two HP routers via their WAN ports for testing. The cable is 5 meters long and terminated with 62-pin DB connectors, and simulates an RS-449/422 link.
- One wide-area network interface cable per wide-area port is included with each HP Router or HP Remote Bridge purchase (prices as indicated if ordered separately):†

#### OptionPart

001V.35 WAN Cable (28606-63008)  
002RS-232 WAN Cable (28606-63006)  
003X.21 WAN Cable (28606-63001)  
004RS-442 WAN Cable (28606-63005)

† Note: Must order one option with each HP router or remote bridge.

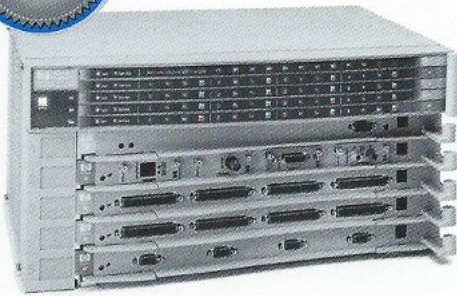
## Product Warranties

HP offers market-leading warranties on the following products:

- LAN adapters, transceivers, AdvanceStack Hub-8U, and AdvanceStack accessories: lifetime
- AdvanceStack Hub-15, Hub-12, Hub-24, Hub-48, Hub-16U, and Dial-A-LAN modules: lifetime;  
*First five years on-site.*
- Bridges, Switches and Routers: three-year, on-site
- Router 210: five-year, on-site
- Network Management: 90 days
- Traffic Probe: one-year

For further warranty information or questions call HP FIRST at 1-800-227-8164.

## HP AdvanceStack Routers



### HP J2430A AdvanceStack Router 650

4 available slots for interfaces, supports a variety of network and WAN protocols,\* spanning tree protocol bridging; chassis-based router for the most demanding central site requirements

### HP J2434A 4-port WAN Interface for Router 650

Synchronous connections for V.35, RS-232, X.21, RS-449/422 at speeds of 9.6 Kbit/s to 2.048 Mbit/s

### HP J2435A 4-port Ethernet/IEEE 802.3 Interface for Router 650

Comes standard with 4 integrated ThinLAN transceiver modules, can accept 10Base-T, Fiber or AUI transceiver modules

### HP J2436A 1-port FDDI Interface for Router 650

Provides dual-attach, 100 Mbit/s connection to FDDI LANS and backbones

### HP J2437A 4-port Token Ring Interface for Router 650

Provides 4 and/or 16 Mbit/s support via 9-pin connector

### HP J2438A 100VG Interface for Router 650

Provides 100VG support via a standard RJ-45 connector

### HP J2443A 8MB Memory Upgrade for Router 650

Increases base system memory to 16MB

### HP J2446A Redundant Power Supply for Router 650

Ensures maximum up-time

### HP J2628A AdvanceStack Router 210

Router module for AdvanceStack 10Base-T Hub-12, Hub-24, or Hub-48; when installed in expansion slot, adds bridging/routing capabilities and a WAN connection

### HP J2629A AdvanceStack Router 210/Hub SNMP Management Bundle

Router 210 Module (J2628A) and AdvanceStack Ethernet SNMP Module (J2603B)

### HP J3159A AdvanceStack Router 210/100VG/ET SNMP Management Bundle

Router 210 Module (J2628A) and AdvanceStack 100VG SNMP/Bridge Module (J2614B)

### HP J2540B AdvanceStack Router 230

1 AUI or BNC, 1 WAN port, supports TCP/IP (RIP) and Novell IPX, spanning tree protocol bridging; single WAN port provides connection from remote office Ethernet to central site network

### HP J27289B AdvanceStack Router 240

1 AUI or BNC, 1 WAN port, supports a variety of network and WAN protocols,\* spanning tree protocol bridging; single WAN port provides connection from remote office Ethernet to central site network

### HP J2543A AdvanceStack Router 245

1 TR, 1 WAN port, supports a variety of network and WAN protocols,\* spanning tree protocol bridging; WAN port provides connection from remote office Token Ring to central site network

### HP J27288A AdvanceStack Router 430

1 AUI or BNC, 3 WAN ports, supports a variety of network and WAN protocols,\* spanning tree protocol bridging; Multiple WAN links providing Ethernet central site to field site connections

### HP J27285A AdvanceStack Router 440

2 AUI, 2 WAN ports, supports a variety of network and WAN protocols,\* spanning tree protocol bridging; router for Ethernet networks supporting primary and secondary WAN links

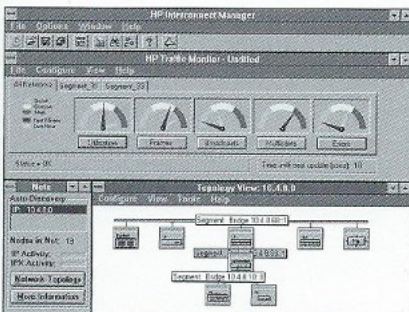
### HP J27286A AdvanceStack Router 445

1 AUI, 1 TR, 2 WAN ports, supports a variety of network and WAN protocols,\* spanning tree protocol bridging; router for mixed Ethernet/Token Ring networks supporting primary and secondary WAN links

*Note: WAN cables for all HP routers are included at no additional charge. One option must be ordered with each HP router (see cable configuration tips).*

\* TCP/IP (RIP/OSPF), DECnet IV, Xerox XNS, Novell IPX and AppleTalk II, plus X.25, Frame Relay and SMDS.

## HP Network Management



### HP J2564A Router Manager for OpenView Windows

SNMP manager applications for HP routers; Requires HP OpenView 7.2 or later

### HP J27361G OpenView Interconnect Manager & Router Manager UX

SNMP manager application for HP routers, hubs and bridges, as well as multivendor SNMP devices; includes HP OpenView Network Node Manager 3.3

### HP J2569H Interconnect Manager for Windows or OpenView/Windows

SNMP application for network-wide traffic monitoring and device management of HP hubs, bridges, and switches, as well as multivendor SNMP devices; point and click operation; minimizes network downtime

### HP J2561A OpenView Traffic Monitor/Windows

HP J2562A  
OpenView Traffic Monitor/UX  
Captures real-time trends and forewarns of network problems

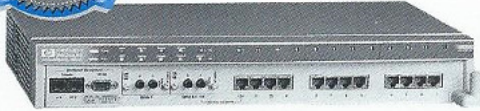
### HP J2347B OpenView History Analyzer/UX

Capacity planning based on historical network utilization

### HP J2348B OpenView Traffic Expert/UX

Visualizes network traffic and recommends actions to optimize network performance

## HP AdvanceStack High Speed Hubs & Accessories



### 100VG Hubs

**HP J3137A**  
**AdvanceStack 100VG Hub-7E**  
7 100 Mbits/s RJ-45 ports, 1 uplink port, 6 downlink ports, 1 RS232 diagnostic port; high speed entry level hub

**HP J2413A**  
**AdvanceStack 100VG Hub-7M**  
7 100 Mbits/s transceiver ports, 1 uplink port, 6 downlink ports; 1 slot for expansion capability, flexible, upgradeable, stackable hub (Available 7/1/96)

**HP J2415A**  
**AdvanceStack 100VG Hub-14**  
14 100 Mbits/s RJ-45 ports, 12 downlink ports, 2 transceiver slots for configurable uplink or downlink port, 1 RS232 console port; 1 slot for expansion capability; high speed stackable hub

**HP J2410A**  
**AdvanceStack 100VG Hub-15**  
15 100-Mbit/s RJ-45 ports, 1 up-link port, 1 transceiver slot, 1 RS-232 console port, and 1 slot for expansion capability; high-speed, stackable hub



### Accessories

**HP J2414B**  
**AdvanceStack 100VG SNMP/Bridge Module**  
When installed in an expansion slot of 100VG Hub-15, Hub-14, and Hub-7M adds SNMP network management and bridging to 10 Mbit/s Ethernet networks; only one module required for SNMP management of up to 16 hubs

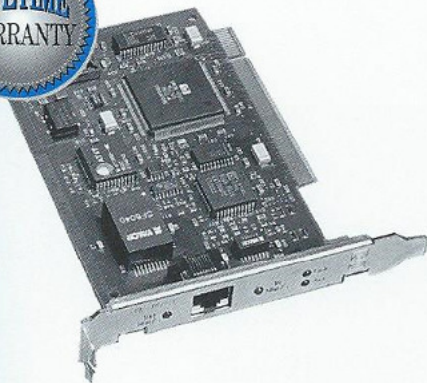
**HP J3027A**  
**100VG Fiber-Optic Transceiver Module**  
Adds a fiber optic port in AdvanceStack Hub-7M, and Hub-14 (Available 7/1/96)

**HP J3028A**  
**100VG UTP Transceiver Module**  
Adds a UTP port in AdvanceStack Hub-7M, and Hub-14

**HP J3157A**  
**AdvanceStack 100VG Dial-A-LAN 2/A Plus Bundle**  
Includes Dial-A-LAN 2A/Plus Module and HP J2414B 100VG SNMP/Bridge Module

**HP J3158A**  
**AdvanceStack 100VG Dial-A-LAN 4/A Plus Bundle**  
Includes Dial-A-LAN 4A Module and HP J2414B 100VG SNMP/Bridge Module

## HP DeskDirect LAN Adapters



### 10/100 VG LAN Adapters

High-performance adapters for use with 10 Base-T or 100VG networks; PCI and EISA cards include busmastering capability

for PCI PCs  
Single HP J2585B\*  
6-pack HP J3009B\*  
24-pack HP J3010B\*



for ISA PCs  
Single HP J2573A  
6-pack HP J3005A  
24-pack HP J3006A



for EISA PCs  
Single HP J2577A  
6-pack HP J3007A  
24-pack HP J3008A



### 10 Mbit LAN Adapters

**PC LAN Adapter NC/16 TP**  
Single HP J2405A  
6-pack HP J2406A  
24-pack HP J2407A  
16-bit ISA client card, 1 TP port; pipelined bus-master DMA for market-leading performance



**PC LAN Adapter/16 TP Plus**  
Single HP 27247B  
6-pack HP 27269B  
24-pack HP J2427B  
16-bit ISA, 1 TP port, 1 AUI port; high-performance adapter for ISA clients and servers



**HP 27252A**  
**PC LAN Adapter/16 TL Plus**  
16-bit ISA, 1 BNC port, 1 AUI port; high-performance adapter for ISA clients and servers

Network boot ROM available as follows:

For Adapter Card	Novell Netware
HP 27252A	HP 27260A
HP 27247B	HP 27260A

Note: Drivers are available to support all major Network Operating Systems. See HP FIRST for PC LAN Adapter Driver Matrix (Document ID #7353).

## HP EtherTwist Hubs & Accessories



**HP 28688B**  
**EtherTwist Hub Plus**

**HP 28692A**  
**ThinLAN Hub Plus**

**HP 28682A**  
**Fiber-Optic Hub Plus**

### Accessories

**HP 28685B**  
**EtherTwist Transceiver**

**HP 28641B**  
**ThinLAN Transceiver**

**HP 28683A**  
**Fiber-Optic Transceiver**

## HP AdvanceStack Workgroup Hubs & Accessories



See HP J2628A and J2629A in the  
"HP AdvanceStack Routers" section for  
add-in routing functionality

### 10Base-T Hubs

**HP J2600A**  
**AdvanceStack**  
**10Base-T Hub-12**  
12 RJ-45 ports 1 BNC, 1 transceiver slot, 1 RS-232 console port and distributed management ports; ideal for small workgroups



**HP J2630A**  
**AdvanceStack 10Base-T Hub-12 Bundle**  
(J2600A) with Ethernet  
SNMP Module (J2603B)



**HP J2601B**  
**AdvanceStack 10Base-T Hub-24**  
24 ports via 2 Telco connectors (2 Telco/RJ-45 adapters), 1 BNC, 1 transceiver slot, 1 expansion slot for upgradability; ideal for medium-sized workgroup LANs

**HP J2631B**  
**AdvanceStack 10Base-T Hub-24 Bundle**  
(J2601B) with Ethernet SNMP Module (J2603B)

**HP J2602B**  
**AdvanceStack 10Base-T Hub-48**  
48 ports via 4 Telco connectors (4 Telco/RJ-45 adapters), 1 BNC, 1 transceiver slot, 1 expansion slot for upgradability; ideal for medium and large workgroup LANs



**HP J2632B**  
**AdvanceStack 10Base-T Hub-48 Bundle**  
(J2602A) with 10Base-T SNMP Module (J2603B)

**HP J2962A**  
**AdvanceStack Redundant Power Supply**  
Support four AdvanceStack devices, including the Hub-24, and Hub-48

### Accessories

**HP J2603B**  
**AdvanceStack Ethernet SNMP Module**  
When installed in an expansion slot of a 12-, 24- or 48-port AdvanceStack 10Base-T hub, adds SNMP network management and security; only one module required for SNMP management of 16 hubs or 784 users

**HP J2633A AdvanceStack Dial-A-LAN 2A/Plus Module and SNMP Module Bundle**  
Remote access server includes HP J2623A Dial-A-LAN 2A/Plus Module, 2 integrated v.34 28.8 Kb/s modems and HP J2603B 10-Base-T SNMP Module

**HP J2634A AdvanceStack Dial-A-LAN 4A Module and SNMP Module Bundle**  
Remote access server includes HP J2624A Dial-A-LAN 4A Module, 4 high-speed asynchronous serial ports and HP J2603B 10Base-T SNMP Module

**HP J2606A**  
**Fiber-Optic Transceiver Module**  
Adds a fiber-optic port (ST connectors) in AdvanceStack hubs

**HP J2607A**  
**Twisted Pair Transceiver Module**  
Adds an RJ-45 port in AdvanceStack 10Base-T hubs

**HP J2608A**  
**ThinLAN Transceiver Module**  
Adds a BNC port in AdvanceStack 10Base-T hubs

**HP J2609A**  
**AUI Port Module**  
Adds an AUI port in AdvanceStack 10Base-T hubs

## HP AdvanceStack Entry Level Hubs & Accessories



### 10Base-T Hubs

**HP J3128A**  
**AdvanceStack 10Base-T Hub-8E**  
8RJ-45 ports, 1 BNC, 1 MDI port, extensive front panel display

**HP J2610B**  
**AdvanceStack 10Base-T Hub-8U**  
Upgradeable AdvanceStack hub; 8 RJ-45 ports, 1 transceiver slot, 1 expansion slot for SNMP Management Module 1 MDI/MDI-X switch

**HP J3134A**  
**AdvanceStack 10Base-T Hub-8U**  
**SNMP Bundle**  
(J2610B) with AdvanceStack 8U/16U SNMP Module (J3133A)

**HP J2611B**  
**AdvanceStack 10Base-T Hub-16U**  
Upgradeable AdvanceStack hub; 16 RJ-45 ports, 1 transceiver slot, 1 expansion slot for SNMP Management Module, 1 MDI/MDI-X switch

**HP J3135A**  
**AdvanceStack 10Base-T Hub-16U**  
**SNMP Bundle**  
(J2611B) with AdvanceStack 8U/16U SNMP Module (J3133A)

### Accessories

**HP J3133A**  
**AdvanceStack 8U/16U SNMP Module\***  
Adds advanced SNMP network management with remote management (via telnet and/or dial-in via external modem) and security for AdvanceStack Hub-8U (J2610B) or Hub-16U (J2611B)

**HP J2606A**  
**Fiber-Optic Transceiver Module**  
Adds a fiber-optic port (ST connectors) in AdvanceStack 10Base-T Hub-8U, and Hub-16U

**HP J2607A**  
**Twisted Pair Transceiver Module**  
Adds an RJ-45 port in AdvanceStack 10Base-T Hub-8U, and Hub-16U

**HP J2608A**  
**ThinLAN Transceiver Module**  
Adds a BNC port in AdvanceStack 10Base-T Hub-8U, and Hub-16U

**HP J2609A**  
**AUI Port Module**  
Adds an AUI port in AdvanceStack 10Base-T Hub-8U, and Hub-16U

*\*This module only functions with the "B" versions of the Hub-8U and Hub-16U.*

## Information by Fax

To access specific documents through HP FIRST call 1-800-333-1917

### • HP Network Connectivity Information

Title	HP FIRST Document ID
- HP Network Connectivity Product Introduction & Benefits	#7351
- HP LAN and WAN Solutions Diagram (all inclusive)	#7352
- HP LAN Adapters	#7353
- HP Transceivers	#7354
- HP Bridges	#7356
- HP Routers	#7357
- HP Network Management	#7358
★ HP Network Connectivity Products Quick Reference Guide	#7375
- HP White Paper/Improving Ethernet Performance with Ethernet Switching	#7380
- HP LAN Switch	#7381
- HP Traffic Probe	#7382
- HP Hubs	#7395
- HP Application Note/Ethernet Security	#7400
★ HP Authorized Education Centers: Network Training Schedule	#7402
- 100 Mbit/s Networking Technology/Background	#7509
- HP White Paper/Guide to Wide Area Networking	#7516
- HP White Paper/Network Management	#7517
- HP White Paper/Network Security	#7518
- HP White Paper/100VG-AnyLAN	#7579
- HP AdvanceStack 100VG Hub-15 and Selectable PC LAN Adapter Cards	#7593
★ HP Technical Training Brochure	#7900

## Technical Training

### • Classroom training\*

See HP FIRST doc #7402 for availability.

These courses are also available as self-paced training kits. Any of the following methods can be used for ordering:

- Call 1-800-768-6060 or 503-297-2282
- In Canada call 1-387-66733
- FAX order information to 510-614-7812
- E-mail order information to hprnd@kpcorp.com
- Visit the RND Web Site:  
[http://www.hp.com/go/network\\_city](http://www.hp.com/go/network_city)

- 100VG-AnyLAN Networks Using HP 100VG Products (1 day)	HP J2614C
- HP Device and Traffic Management/Windows (2 days)	HP J3124A
- Designing Interconnected Workgroups (2 days)	HP J3121A
- Interconnecting Remote Workgroups (3 days)	HP J3122A
- HP LAN Workgroups (1 day)	HP J3129A
- HP Device and Traffic Management/UNIX (4 days)	HP J3131A
- HP Network Printing Solutions (1 day)	HP J3132A
- HP LAN/WAN Routing (3 days)	HP J3132A

\* Training for resellers who currently have HP Advantage Accounts is reimbursable in most instances.

### • To order literature

- Dealers can order literature from HP using the Dealer Literature Order Form from the New In Stock Publication. Complete the form and fax your order to 1-408-864-8049.

- To order by phone, call 1-800-544-9976 and select option 4.

### • Product Documents

- HP AdvanceStack 10Base-T Product Sales Brochure, "Stack to the Future"—part no. 5962-7223E

- HP AdvanceStack 100VG Hub Products Brochure, "100VG. Full Speed Ahead"—part no. 5963-1079E

- HP AdvanceStack Internetworking Products Brochure, "Extend Your Network"—part no. 5963-1081E

- HP Network Connectivity Products Catalog—part no. 5962-9489E

- HP Network Connectivity Products Poster—part no. 5964-0194E

☆ HP Connections Newsletter—part no. 5964-1620EUS

★ HP Instant Reference Guide (HP portable, PC, network connectivity, and server products)—part no. 5964-1618EUS

### • White Papers

- HP White Paper/100VG-AnyLAN—part no. 5091-9910E

- HP White Paper/Guide to Wide Area Networking—part no. 5091-8875E

- HP White Paper/Network Management—part no. 5091-8881E

- HP White Paper/Network Security—part no. 5091-8873E

- HP White Paper/Improving Ethernet Performance with Ethernet Switching—part no. 5091-9724E

### • Success Stories

☆ Network USA—part no. 5964-2190E

☆ Medtronic Promeon—part no. 5964-2440E

☆ Sun Health Corp.—part no. 5964-2443E

☆ Effingham Schools—part no. 5964-2444E

☆ Spalding Sporting Goods—part no. 5964-5952E

☆ Lehigh University—part no. 5964-5954E

☆ U.S. Bank—part no. 5964-5955E

☆ Somerset Pharmaceutical—part no. 5964-6626E

☆ Mindscape Software—part no. 5964-6627E

☆ The Body Shop—part no. 5964-6628E

☆ T & T Group—part no. 5964-6629E

### ★ Updated Items

☆ New Items

## Literature

### • Technical Documents

- HP Network Management Reference Guide—part no. 272256-90003—*Note: This book must be ordered directly by calling 1-800-227-8164*

- 100VG-Redundant Power Application Note—part no. 5964-4030E

- 100VG-AnyLAN Application Note—part no. 5963-6682E

★ Extending your reach with Remote Access Application Note—part no. 5964-2209E

- HP OpenView Technical Evaluation Guide—part no. 5091-5134E

- Designing HP AdvanceStack Workgroup Networks—part no. 5964-1731E

- Planning and Designing High-Speed Networks Using 100VG-AnyLAN—*Note: This book must be ordered directly from Prentice Hall, the publisher (phone: 1-515-284-6761)*

### • Other Literature

- HP Network Connectivity Products Visual Identity Guidelines—part no. 5963-2297E

### • Sales Training

☆ How Networks Work—*Note: This book must be ordered directly from Ziff-Davis, 5903 Christie Ave., Emeryville, CA 94068*

☆ Technology Basics for HP Personal & Networked PCs—part no. 5091-6400EUS

☆ Network and Network Management Technology Basics—part no. 5963-6723EUS

☆ Network Systems Solutions—part no. 5964-4160EUS

☆ Network Systems Solutions - Server & Server Management—part no. 5964-4211EUS

☆ Network Systems Solutions - Interconnected Workgroup—part no. 5964-4212EUS

☆ Network Systems Solutions - UPS & Server Rack—part no. 5964-4210EUS

## World Wide Web

To access information via the WWW, the URL is: [http://www.hp.com/go/network\\_city](http://www.hp.com/go/network_city)

Windows is a U.S. trademark of Microsoft Corp. UNIX is a registered trademark in the United States and other countries, licensed exclusively through X/Open Company Limited. Novell and NetWare are U.S. registered trademarks of Novell Inc.

The information contained in this document is subject to change without notice.

©Copyright 1996 Hewlett-Packard Company

Printed in USA 2/96 P/N 5964-9086E